

Human LTBR Protein

Cat. No. LTB-HM201

Description

Source	Recombinant Human LTBR Protein is expressed from HEK293 with hFc tag at the C-Terminus. It contains Gln31-Met227.
Accession	P36941-1
Molecular Weight	The protein has a predicted MW of 48.5 kDa. Due to glycosylation, the protein migrates to 60-70 kDa based on Bis-Tris PAGE result.
Endotoxin	Less than 1 EU per μg by the LAL method.
Purity	>95% as determined by Bis-Tris PAGE >95% as determined by HPLC

Formulation and Storage

Formulation	Lyophilized from 0.22 μm filtered solution in PBS (pH 7.4). Normally 8% trehalose is added as protectant before lyophilization.
Reconstitution	Centrifuge the tube before opening. Reconstituting to a concentration more than 100 $\mu\text{g}/\text{ml}$ is recommended. Dissolve the lyophilized protein in distilled water.
Storage	-20 to -80°C for 12 months as supplied from date of receipt. -80°C for 3 months after reconstitution. Recommend to aliquot the protein into smaller quantities for optimal storage. Please minimize freeze-thaw cycles.

Background

Components of lymphotoxin beta receptor (LTBR)-associated signaling complexes, including TRAF2, TRAF3, NIK, IKK1, and IKK2 have been shown to participate in the coupling of LTBR to NFkappaB. TRAF3 functions as a negative regulator of LTBR signaling via both canonical and non-canonical NFkappaB pathways by two distinct mechanisms. These effects of TRAF3 depletion did not require LTBR signaling and were consistent with autonomous activation of the non-canonical NFkappaB pathway.

Assay Data

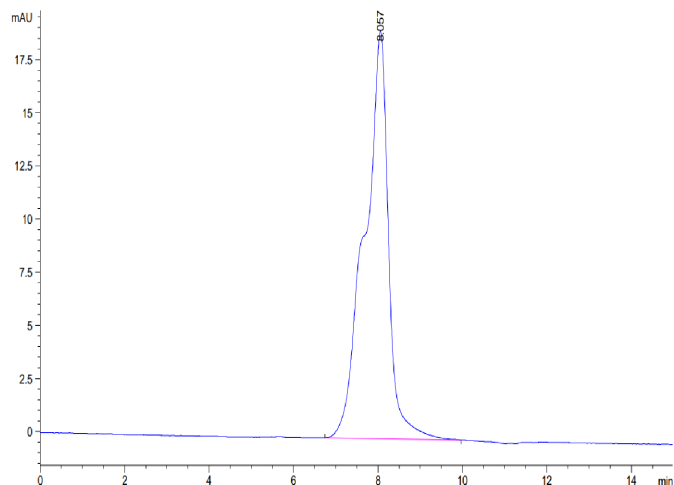
Bis-Tris PAGE



Human LTBR on Bis-Tris PAGE under reduced condition. The purity is greater than 95%.

SEC-HPLC

Assay Data

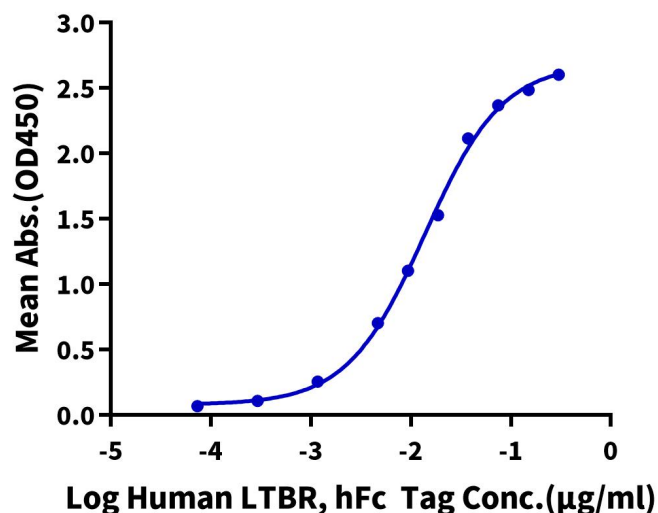


The purity of Human LTBR is greater than 95% as determined by SEC-HPLC.

ELISA Data

Human LTBR, hFc Tag ELISA

0.1 µg Human LIGHT, His Tag Per Well

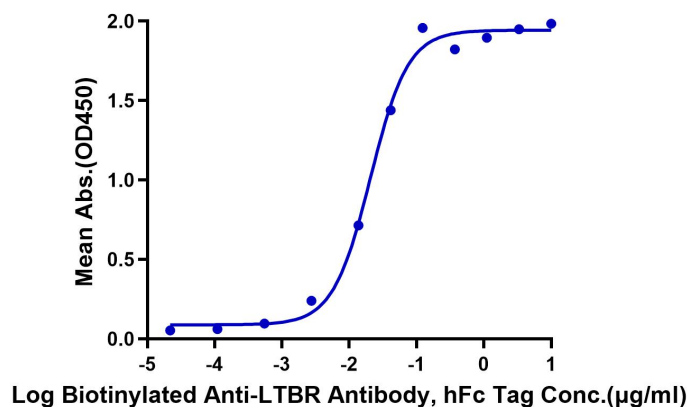


Immobilized Human LIGHT, His Tag at 1 µg/ml (100 µl/Well) on the plate. Dose response curve for Human LTBR, hFc Tag with the EC50 13.8 ng/ml determined by ELISA (QC Test).

ELISA Data

Human LTBR, hFc Tag ELISA

0.05 µg Human LTBR, hFc Tag Per Well



Immobilized Human LTBR, hFc Tag at 0.5 µg/ml (100 µl/Well) on the plate. Dose response curve for Biotinylated Anti-LTBR Antibody, hFc Tag with the EC50 20.7 ng/ml determined by ELISA.